

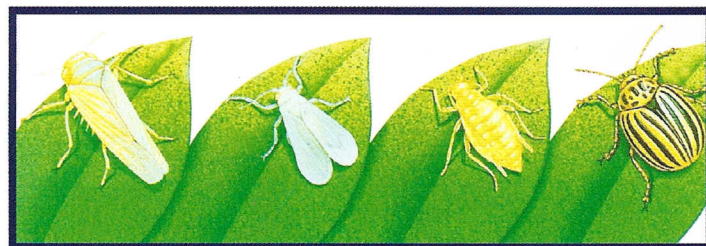
# Horticulture

# Highly Effective S

## **Confidor® SL 200**

*Imidacloprid 200 g/l*

Confidor® is a broad spectrum systemic insecticide used as a foliar or soil treatment for the control of a wide range of sucking, chewing and soil pests in coffee, vegetables, ornamentals, tobacco, sugarcane and other crops. The active ingredient in Confidor®-Imidacloprid, belongs to the Chloronicotinyl chemical group of active ingredients that disrupt the nervous system of insects. When used as recommended, Confidor® is IPM compatible (mostly when used as a drench application) in all crop production.



*Confidor® has a broad spectrum of activity*

### **Main Area of Activity**

Confidor® gives a good control of a wide range of sucking, chewing and soil pests. Of particular interest is its control of leafminer, mealybugs, thrips, whiteflies, psyllids, termites, scale insects, aphids and other virus vectors in a large number of important crops.

### **Excellent Root Systemic Properties**

After soil treatment, e.g. via drip irrigation system or drench, the active ingredient Imidacloprid is taken up by the roots and transported into the aerial parts (stems and leaves) via the sap and distributed throughout the plant. Soil pests are controlled through contact with the product.



*Whiteflies*



*Leafminer damage*

### **Long Duration of Action**

After application, Confidor® protects the roots and the foliage through its contact and systemic action. It acts as contact and stomach poison and has considerable residual activity.

### **Outstanding Performance**

The action mechanism of Confidor® differs not only from that of the organophosphate and carbamate compounds but also from that of the pyrethroids. This permits the effective control of insect strains resistant to other compounds such as aphids and whiteflies. Confidor® is held within the soil particles, resists leaching and provides some protection from further pest attacks.

### **Crop Tolerance**

Confidor® is well tolerated by all crops tested when used at the recommended rates whether applied as a foliar or soil treatments.

### **Resistance Management**

To prevent possible resistance development against chloronicotinyls, Confidor® SL 200 applications should be alternated with registered products of other chemical groups with different mode of action.



# Systemic Control

## Application Rates and Timing

Crop	Pest	Rate	Timing / Remarks
Coffee	Leafminer ( <i>Leucoptera meyricki</i> )	1.5 ml per litre of water per tree	Soil drench along the drip of each tree. Apply at the onset of rains or irrigate after application to facilitate uptake. Confidor should be applied 6-8 weeks before the peak occurrence of the pest season.
	Fried Egg Scale ( <i>Aspidiotus spp.</i> )	3.0 ml per litre of water per tree	
Ornamentals* (Roses, Statice, Carthamus, Lilies, Hypericum Chrysanthemums)	Whiteflies ( <i>Bemisia tabaci</i> ) Thrips ( <i>Thrips spp.</i> ) Aphids ( <i>Aphis spp.</i> ) Mealybugs	<b>Foliar spray:</b> 50 ml per 100 litres of water or 500 ml/ha <b>Soil drench:</b> 0.3 - 0.5 ml per 4 litres of water per m <sup>2</sup>	Apply as a full cover foliar spray. For potted plants, apply as soon as potting is done.  Apply through drip irrigation as a soil drench.
Agro-forestry, Nurseries of Trees	Soil pests, Termites	2 ml per litre of water per tree	Apply as soil drench in the nursery bed or around the base of the tree. Drench at the base of the plant with adequate amount of water at nursery stage and during tree transplanting.
Anthill/Mounds	Termites	2.5 ml per litre of water	Drench each termite mound with at least 5-10 litres of Confidor solution depending on the size.
Vegetables	Whiteflies, Aphids Leafhoppers, Termites,	<b>Drench:</b> 0.2 ml in 1 litre running water <b>Foliar:</b> 0.5 ml per litre of water or 500 ml/ha	Apply as soil drench in the nursery or field through drip application Apply as foliar spray.
Tobacco	Whiteflies, Aphids, Termites	<b>Nursery:</b> 2.0 ml in 4 litres of water per m <sup>2</sup> <b>Transplant:</b> 72 ml in 20 litres of water to cover 1000 plants	Apply as a soil drench in the nursery. The soil must be moist before drenching with Confidor Apply as a soil drench after transplanting seedlings in the field.
Sugarcane	White cane grubs, Termites	<b>Dipping Cane Setts:</b> 500 ml in 660 litres of water to treat 35 tons of cane setts. <b>In Field:</b> 500 ml/ha	Apply as furrow spray after planting.
Tomato	Aphids	0.3 lts/ha in 1000 litres of water (field, foliar spray)	Apply at first signs of infestation as a full cover spray.
Citrus	Leafminer, Red Scales, Thrips	15-20 ml in 10 litres of water per tree or 9-12 lts/ha assuming 600 trees per ha.	Apply as a soil drench close to the trunk base of each citrus tree.
	Black ants  Leafminer, Red Scales, Thrips, Ants	10 ml/tree  10 ml/tree or 6lts/ha	Apply as stem painting by using a paint brush (a 30 cm stem band above the ground surface).

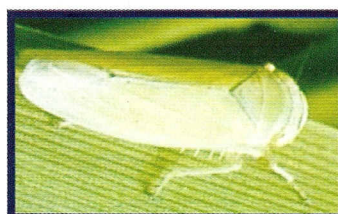
\* As the different species and varieties of ornamentals may differ in their sensitivity to chemicals, users are advised to always check for the crop tolerance by first treating a few plants before large scale application is undertaken.



*Aphids*



*Termites*



*Leafhopper*



*Thrips*